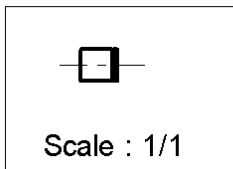
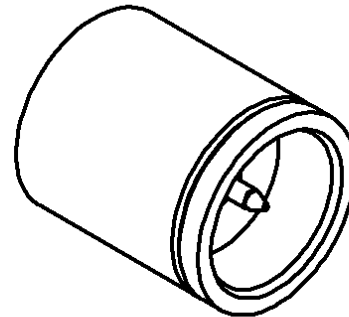
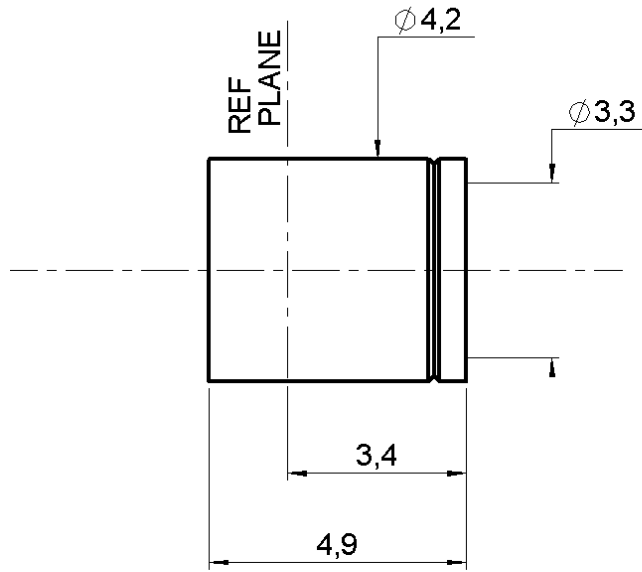


STRAIGHT MALE-MALE ADAPTER

R209.307.000

6.4MM - PACK.100

Series : MMS



All dimensions are in mm.



COMPONENTS	MATERIALS	PLATINGS (μm)
BODY	BRASS	NICKEL 2
CENTER CONTACT	BRASS	NICKEL 2
OUTER CONTACT	-	-
INSULATOR	PTFE	-
GASKET	-	-
OTHERS PARTS	-	-
-	-	-
-	-	-

Issue : 0207 C

In the effort to improve our products, we reserve the right to make changes judged to be necessary.



STRAIGHT MALE-MALE ADAPTER

R209.307.000

6.4MM - PACK.100

Series : MMS

PACKAGING

SPECIFICATION

Standard	Unit	Other
100	'W' option	Contact us

ELECTRICAL CHARACTERISTICS

ENVIRONMENTAL

Impedance		50 Ω
Frequency		0-6 GHz
VSWR	* +	0.000 x F(GHz) Maxi
Insertion loss		0.2 √F(GHz) dB Maxi
RF leakage	- (NA - F(GHz)) dB Maxi
Voltage rating		50 Veff Maxi
Dielectric withstanding voltage		250 Veff mini
Insulation resistance		500 MΩ mini

Operating temperature	-40/+125 ° C
Hermetic seal	NA Atm.cm3/s
Panel leakage	NA

OTHERS CHARACTERISTICS

Assembly instruction **NA**

Others :
*1.2 à 2 GHz

MECHANICAL CHARACTERISTICS

Center contact retention		
Axial force – Mating end	10	N mini
Axial force – Opposite end	10	N mini
Torque	NA	N.cm mini
Recommended torque		
Mating	NA	N.cm
Panel nut	NA	N.cm
Mating life	50	Cycles mini
Weight	0.000	g

Issue : 0207 C

In the effort to improve our products, we reserve the right to make changes judged to be necessary.

